

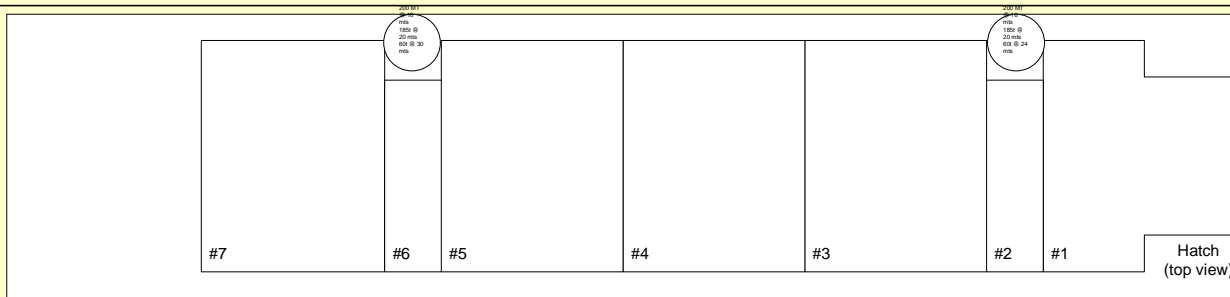


Intermarine's Century Class Vessels

Industrial Century, Ocean Atlas, Ocean Titan,
Ocean Charger, Industrial Champ,
Industrial Cape, Industrial Crescent

Year of Build:	2000 (Ocean Atlas, Ocean Titan, Ocean Charger) 2001 (Champ, Cape, Century) 2002 (Crescent)		
Flag:	Antigua (Champ, Century, Cape, Crescent) United States (Ocean Atlas, Ocean Titan, Ocean Charger)		
Type:	Heavy-Lift, Box-Hold, Multipurpose Vessel		
Class:	Germanischer Lloyd GL + 100 A5 "E" G – equipped for carriage of containers – SOLAS II-2. Reg. 54 + MC AUT "E" Grain Fitted		
Service Speed:	16.5 Knots		
LOA:	119.80 M		
Beam:	20.00 M		
Draught:	7.715 M		
DWAT:	8,000 MT		
GRT/NRT:	7252 / 2754		
Holds / Hatches:	3 Holds/3 Hatches		
Grain/Bale capacity:	About 395,000 cuft		
Free height in holds:	12.00 M		
Adjustable Tweendecks:	Yes – 3 positions		
Longest hold/hatch:	Tweendeck pontoons can be configured to provide one long unobstructed cargo hold with one weather deck hatch opening of about 71M x 15.8M.		
Cargo Gear:	Two electro-hydraulic cranes with the following capacities: Crane one: Heavy Lift 200 MT (between No. 1 + 2 Hold at Portside) Crane two: Heavy Lift 200 MT (between No. 2 + 3 Hold at Portside) Cranes Combinable for 400MT SWL		
Hatch Covers:	Hatch One:	16.85M x 10.6M / 15.8M:	2 panels
	Hatch Two:	42.42M x 15.8M:	4 panels
	Hatch Three:	12.47M x 15.8M:	1 panel
Container Intake:	Number of 20' containers (8.5' in height)	In Hold:	204
		<u>On Deck:</u>	<u>302</u>
		Total:	506
Reefer:	The vessel has 80 reefer plugs of 12kw capacity.		

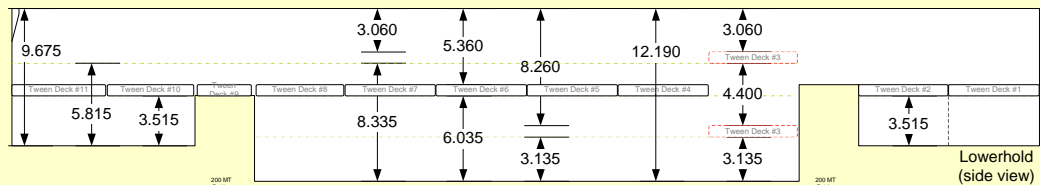
All details about and without guarantee.



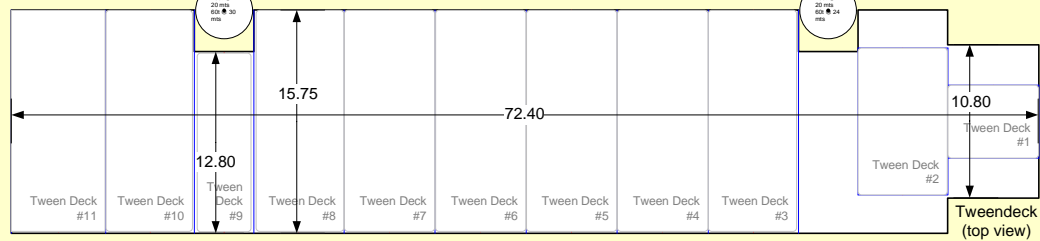
CENTURY CLASS VESSELS

- Particulars:
- LOA : 119.8 mts
 - Breadth : 20.00 mts
 - Draft : 7.7 mts
 - DWT : 8034 MT
 - Bale : 11,597.52 m3
 - CR : 2x200MT
 - Deck : 302 TEU
 - Under deck: 214 TEU
- ~ Square Meters:
- HC - 1083 m2
 - TD - 1083 m2
 - TT - 910 m2

- Uniform Deck Strength:
- TT - 15 MT/m2
 - TD - 3.5 MT/m2
 - HC - 2.5 MT/m2



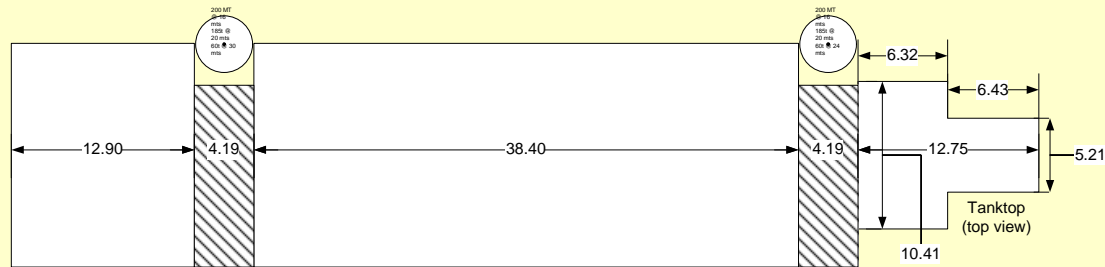
Tween= 6143 m³
1083 m²



#1 L/H = 433 m³
106 m²

#2 L/H = 4138 m³
606 m²

#3 L/H = 882 m³
200 m²



Meters fwd of AP : 1000 mm

Frame Spacing : 800 mm

